



INSTITUTO DE HIGIENE E
MEDICINA TROPICAL
DESDE 1902



UNIVERSIDADE
NOVA
DE LISBOA

Course on Molecular Epidemiology of Parasitic and Infectious Diseases

11 - 16 January 2016

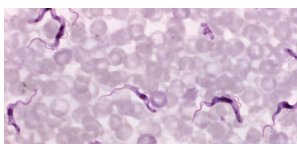
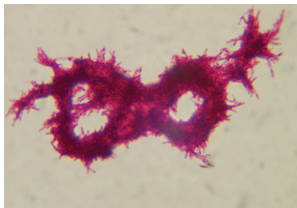
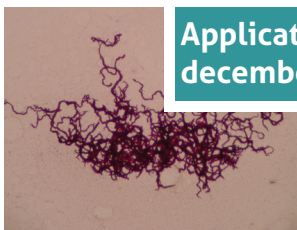
Introduction

The Course in Molecular Epidemiology of Parasitic and Infectious Diseases, organized by the Institute of Hygiene and Tropical Medicine of NOVA University, Lisbon, Portugal, and Fundação Oswaldo Cruz, Bahia, Brazil, welcomes all students and scientists interested in this exciting area of research. The impact of Molecular Epidemiology to address and tackle Global Public Health questions and problems greatly increased in recent years as new, robust, multidisciplinary approaches are becoming widely available.

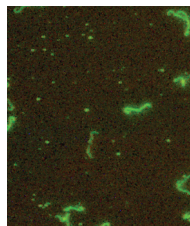
In this first course several international recognized specialists from the USA, Brazil, and Portugal, will share their field experience and scientific knowledge in highly interactive theoretical and practical sessions.

The topics to be addressed are diverse, and cover a broad spectrum of utmost relevant areas in a constantly and quickly changing world.

Welcome to Lisbon EpiMol 2016!



Applications until
December 18th, 2015



Topics to be covered

- Principles of molecular epidemiology
- Laboratory methods in molecular epidemiology
- Similarity and relatedness validation
- Stratification of data to refine study designs
- Epidemiological surveillance
- Outbreaks and endemic disease occurrences
- Bioinformatics in molecular epidemiology: Metagenomics and Whole Genome Sequencing
- Nosocomial infections, global surveillance systems and resistances
- Molecular epidemiology of viral infections
- Molecular epidemiology of parasites and vectors
- Population genetics

Organization

- Celso Cunha
- Luzia Gonçalves
- Maria Rosário O. Martins
- Zulmira Hartz

Recipients

- PhD, MSc students, researchers and specialists interested in epidemiology research
- Vacancies: 10 (IHMT, ITQB, NMS/FCM)
20 (external students)

ECTS: 5 ECTS

Course fee: 1000€ (applicable to external students)

For more information, please contact:

- Celso Cunha (ccunha@ihmt.unl.pt)
- Luzia Gonçalves (luziag@ihmt.unl.pt)

Invited lecturers

- Lee W. Riley, University of California, Berkeley, USA
- Ronald Blanton, Case-Western Reserve University Cleveland, USA
- Albert Ko, Yale University, New Haven, USA
- Mitermayer Galvão Reis, Fundação Oswaldo Cruz, Bahia, Brasil
- Edison Duarte Moreira, Fundação Oswaldo Cruz, Bahia, Brasil
- Ana Abecasis, IHMT-UNL, Portugal
- João Pinto, IHMT-UNL, Portugal
- Ricardo Parreira, IHMT-UNL
- Miguel Viveiros, IHMT-UNL, Portugal
- Maria Luísa Vieira, IHMT-UNL, Portugal